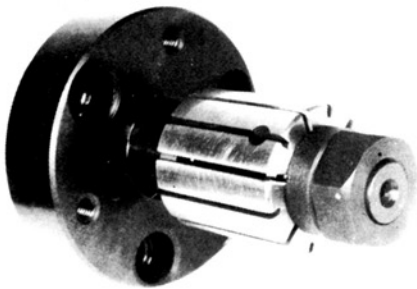


Standard Expanding Mandrels



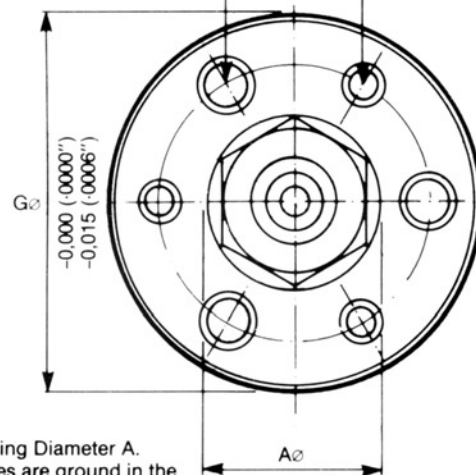
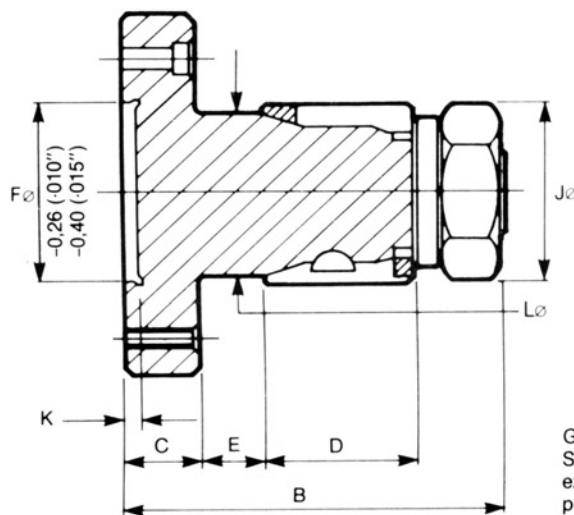
Nut operated face-plate
(standard length)



'F' dimension to be qualified.

Mounting Screw Holes to Suit 'N' Screws

End Locator Fixing Holes to suit 'R' Screws



Gripping Diameter A. Sleeves are ground in the expanding position to provide loading clearance for component.

For maximum efficiency expandings sleeves must be preloaded to maintain contact with mandrel double angles at all times.

Model	A Range		B	C	D	E	F	G	J	K	L	N		R		Order by Tool No.
	Min	Max										PCD	Sz.	PCD	Sz.	
000	.500	.625	3.150	.787	.866	.591	1.575	2.953	.394	.236	.496	2.283	M8	1.102	M4	2.000.90.2
	12,5	16,0	80,0	20,0	22,0	15,0	40,0	75,0	10,0	6,0	12,6	58,0		28,0		
050	.625	.875	3.346	.787	1.063	.591	1.575	2.953	.512	.236	.555	2.283	M8	1.102	M4	2.050.90.2
	16,0	22,0	85,0	20,0	27,0	15,0	40,0	75,0	13,0	6,0	14,1	58,0		28,0		
100	.875	1.125	3.740	.787	1.260	.610	1.575	2.953	.748	.236	.815	2.283	M8	2.283	M6	2.100.90.2
	22,0	28,5	95,0	20,0	32,0	15,5	40,0	75,0	19,0	6,0	20,7	58,0		58,0		
150	1.125	1.625	3.937	.787	1.496	.598	1.575	2.953	.945	.236	1.035	2.283	M8	2.283	M6	2.150.90.2
	28,5	41,0	100,0	20,0	38,0	15,2	40,0	75,0	24,0	6,0	26,3	58,0		58,0		
200	1.625	2.500	4.331	.787	1.693	.591	1.575	2.953	1.417	.236	1.457	2.283	M8	2.283	M6	2.200.90.2
	41,0	63,5	110,0	20,0	43,0	15,0	40,0	75,0	36,0	6,0	37,0	58,0		58,0		
250	2.500	3.00	5.709	.984	2.008	.984	2.362	4.724	2.165	.236	2.256	3.701	M10	3.701	M8	2.250.90.2
	63,5	76,2	145,0	25,0	51,0	25,0	60,0	120,0	55,0	6,0	57,3	94,0		94,0		
300	3.00	3.50	5.906	.984	2.244	.984	2.362	4.724	2.559	.236	2.799	3.701	M10	3.701	M8	2.300.90.2
	76,2	89,0	150,0	25,0	57,0	25,0	60,0	120,0	65,0	6,0	71,1	94,0		94,0		
350	3.50	5.125	6.890	1.181	2.500	.984	3.937	7.087	3.346	.236	3.311	5.906	M12	5.906	M10	2.350.90.2
	89,0	130,0	175,0	30,0	63,5	25,0	100,0	180,0	85,0	6,0	84,1	150,0		150,0		
400	5.125	7.00	7.677	1.181	3.130	.984	3.937	7.087	4.882	.236	4.846	5.906	M12	5.906	M10	2.400.90.2
	130,0	178,0	195,0	30,0	79,5	25,0	100,0	180,0	124,0	6,0	123,1	150,0		150,0		

THE FACE PLATE NUT OPERATED EXPANDING MANDREL CAN BE USED ON ANY MACHINE WITH NO DRAWBAR FACILITY, FOR GENERAL TURNING AND GRINDING OPERATIONS. THE NATURAL PULL-BACK ACTION OF THE SLEEVE ENSURES THE COMPONENT IS HARD AGAINST THE LOCATION FACE.